

BethBC

Impact

1979 - 2019

Model  
Christ



Impact

1979 - 2019

1979 - 2019

Model  
Christ

BethBC





# Our MISSION

Bethlehem Bible College  
exists to:

- Train people to serve Christ in the world
- Advocate Palestinian evangelical perspective
- Model Christ through community development





Bethlehem Bible College is an interdenominational college which uses Arabic as its primary language of instruction. All courses are accredited through MEATE (Middle East Association for Theological Education), the Palestinian Ministry of Higher Education and several international theological organizations.





**We aim for a high  
academic standard  
while encouraging  
spiritual growth and  
commitment to Christ.**

# Our Programs



# UNDERGRADUATE STUDIES

A video frame showing a woman with long dark hair, wearing a white patterned top and a dark jacket, speaking. The background is a textured stone wall. Text overlay reads: Interview with Ronza Saba BethBC Graduate.

Interview with  
**Ronza Saba**  
BethBC Graduate

- BA and Diploma in Biblical Studies and Christian Education, in Bethlehem, Galilee and Gaza (taught in Arabic)
- Diploma in Media Studies (taught in Arabic)
- Diploma in Tour Guiding (taught in English)

Video: I'm a light in my country  
[https://www.youtube.com/watch?v=K6Vb-vY-c\\_k&t=3s](https://www.youtube.com/watch?v=K6Vb-vY-c_k&t=3s)



# MASTER'S PROGRAMS



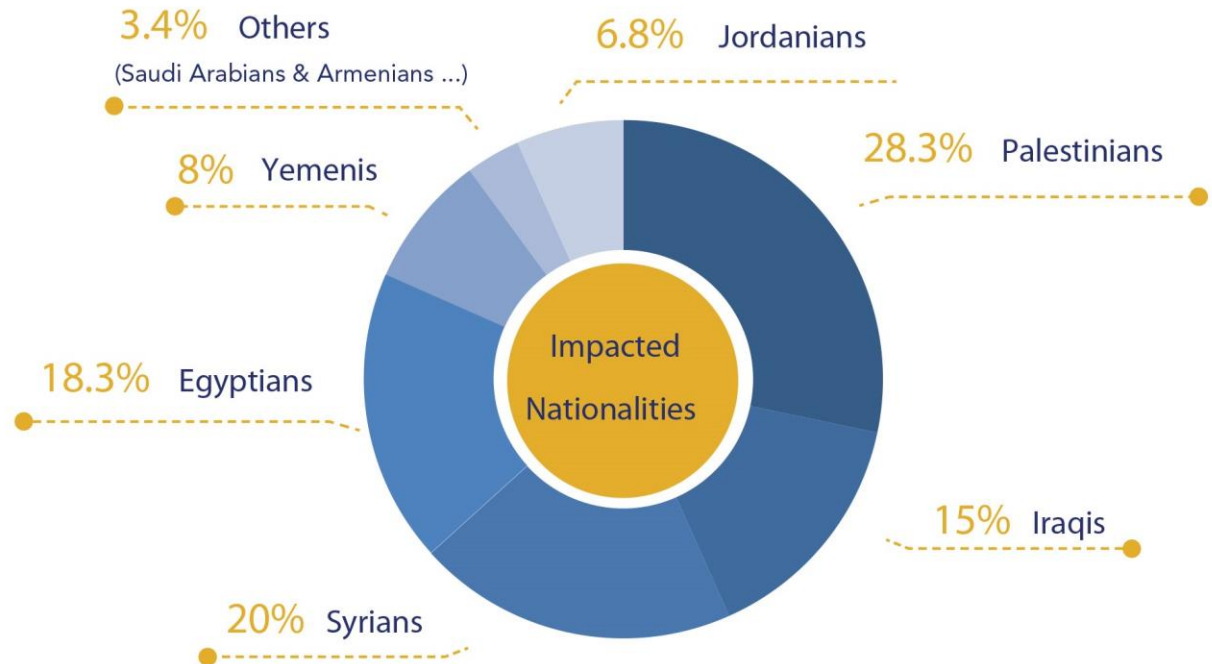
## **MA in Christian Leadership & Ministry (taught in Arabic)**

- MA in Bethlehem
- MA in Galilee
- MA in Gaza

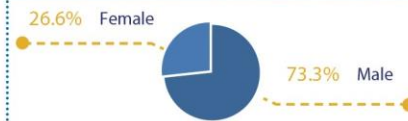
# ONLINE DIPLOMA in Biblical Studies

## 2nd Year After Launch

Our main goal is to equip Arab believers with the depth of knowledge of Scriptures that will result in transformation at both the personal and ministry levels.



60  
Students enrolled



180  
Lessons written

18  
Courses developed

218  
Videos produced

18  
Different countries of  
residence





# Our Students



BethBC encourages its students to fully participate in the life of the College, as well as to attend student retreats and engage in outreach activities locally and abroad.







**"I believe that there is a great need for servants in my church. We need more leaders who know the Bible, who can help others understand and believe the message that the Lord is here for us, that He is our Savior."**

**Ala' Khair**



BETHLEHEM  
BIBLE COLLEGE

مكتبة بيت لحم للكتاب المقدس



My role as a  
Christian on this  
earth is to be  
part of this so-  
ciety, to have an  
active role in it,  
and to declare  
my Christianity  
without fear or  
hindrance



Cassandra Massou  
Biblical Studies Student





BETHLEHEM  
BIBLE COLLEGE

كلية بيت لحم للكتاب المقدس

“

There is no limit to ambition, no barriers to dreams, and no end to success. There is nothing impossible for the woman, because since she held a book, she was able to find its treasures and add another meaning to knowledge.”

---

**Elham Nissan**





Our **Public Library**, the first in Bethlehem, boasts over 26,000 books in Arabic and English.



A close-up photograph of four young boys of diverse ethnicities. The boy on the left has dark hair and is looking slightly to the side. The boy in the center is smiling and looking towards the camera. The boy on the right is also smiling and looking towards the camera. The boy in the foreground is partially visible, smiling broadly. They are all wearing casual clothing, including sweaters and a striped shirt.

# BethBC Community Outreach Center

## **The Shepherd Society**

assists struggling Palestinians in the West Bank with meeting basic needs such as food, employment, and medical care. The goal of the Shepherd Society is to provide a means for the global community and Christians worldwide to encourage and financially assist the struggling Palestinian's in the West Bank and Gaza along with the Iraqi and Syrian refugees in Jordan.

Visit their wesbite here:

<https://shepherd-society.org/>





## **A Pot in His Hands**

is a women's ministry which aims to empower young Palestinian Christian women to make a positive impact in their world. Ministry activities include monthly meetings, counseling, seminars and production of a quarterly women's magazine.



آنية بيده

Our **New Vision Media Center** aims to bring hope and encouragement to people across the Arabic-speaking world through biblical values-based television programs on issues such as human rights, health, family and environment.





# Community Training Department

The Community Training Department was established in 2016 in order to:

1. Provide professional training for the community to obtain the knowledge needed for better likelihood in finding jobs.
2. Use our capacity to reach out to the local community as a way of outreach to bless people.



# CONFERENCES







Every other year, we host the **Christ at the Checkpoint** conference to engage the wider evangelical community in robust and thoughtful Biblical discussion on the issues surrounding Palestine and Israel.

# The Global Leadership Summit

Bethlehem Bible College hosts every year the Global Leadership Summit (GLS) in Bethlehem in cooperation with Willow Creek church.







The College is looking for full-time **volunteers** to fill the following positions:

1. Manage the Guest House
2. Assist in the Communication & Development Department
3. Teach English
4. IT: Code writer and/or software developer
5. Web Developer
6. Proposal writer/reporting skills
7. Trainer on writing skills (intermediate - advanced)
8. Short term video editing - proficiency in After Effect

Video: Summer Camp 2016  
<https://www.youtube.com/watch?v=Ea8vMI5Oa9k>

**“I know life is not easy, and I want to be here with you.”**

**-Anne, a volunteer from the UK, English as a Second Language Instructor**





# Our Future





Please pray with us for peace, as violent confrontation is a barrier to effective education and planning. Our plans include strengthening our current programs, enlarging our Bethlehem campus and increasing our development and recruiting efforts so we can effectively serve even more students.





Click on the icons for ways to support us, as the only evangelical Bible college in the Holy Land:



GIVE



VOLUNTEER



VISIT



SHARE



PRAY

A photograph of the Bethlehem Bible College building, a two-story structure made of light-colored stone. The building features arched windows with white metal grilles and a balcony with a white railing. A blue sign with white Arabic and English text is mounted on the upper part of the facade. The text on the sign reads 'كلية بيت لحم للكتاب المقدس' and 'Bethlehem Bible College'. There are also decorative stars on the facade. In the foreground, there are some bare tree branches and a green corrugated metal roof.

As the only Arabic-speaking evangelical college in the West Bank and Gaza, BethBC will continue to fill a major Christian need in this part of the world. Despite the religious and political turmoil of this region the Christians of the Middle East are being kept by the power of God (1Peter 1:5) and we are confident that the greatest days for the church in this region are yet ahead of us.

**Thank you for standing with us!**